

**Shaw
& Co**
ESTATE
AGENTS



£585,000

Whitton Road

Hounslow, TW3 2EJ

**Shaw
& Co**

PROPERTY SUMMARY

Shaw & Co present a fantastic opportunity to purchase this wonderful four bedroom end-of-terrace house on Whitton Road. Offered chain free and in good condition throughout, this property is ideal for families or buyers seeking a spacious and well-maintained home.

The ground floor comprises a convenient WC, a versatile fourth bedroom, a bright and comfortable living room, and an extended rear kitchen providing ample space for cooking and dining.

Upstairs, the property offers three bedrooms, including two generous double rooms and a well-proportioned single bedroom, along with a modern family bathroom.

Externally, the property benefits from additional land to the rear, which includes a garage, offering excellent potential for storage, parking, or further development (subject to the necessary permissions).

Early viewing is highly recommended to fully appreciate everything this home has to offer.

4

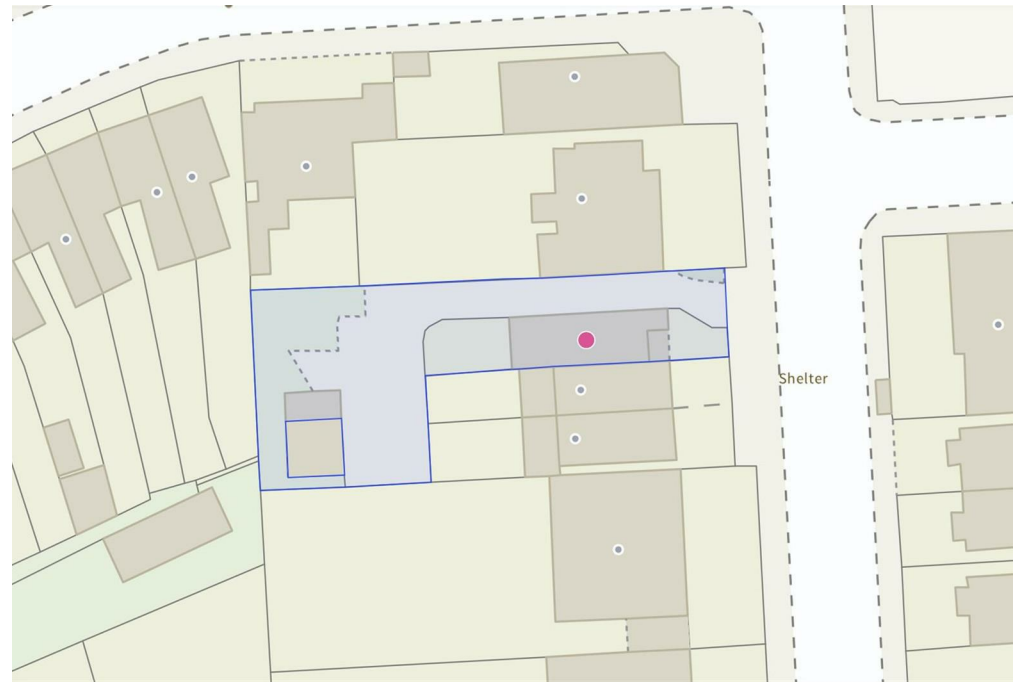


1



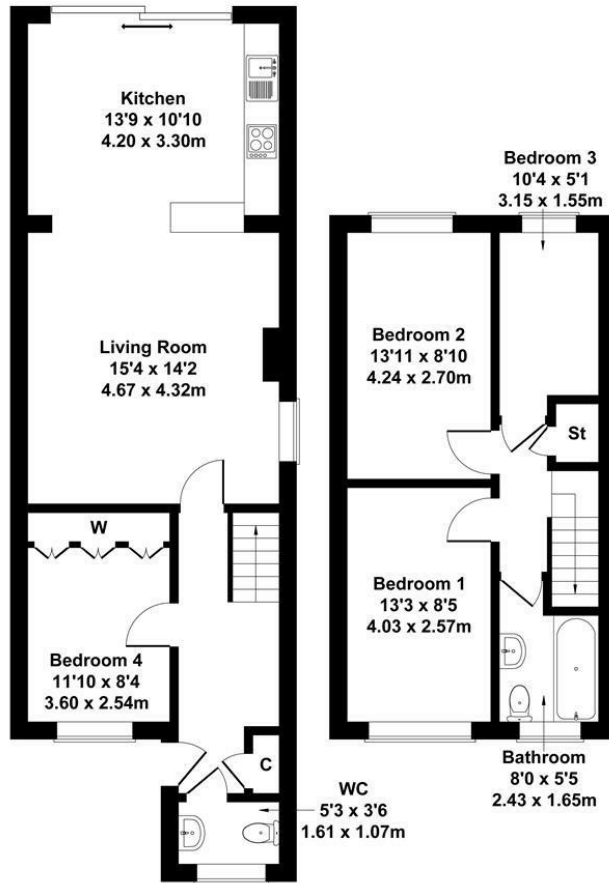
1





Whitton Road

Approximate Gross Internal Area
1001 sq ft - 93 sq m



GROUND FLOOR

FIRST FLOOR

Not to Scale. Produced by The Plan Portal 2026
For Illustrative Purposes Only.



LOCAL AUTHORITY

Hounslow

TENURE

Freehold

COUNCIL TAX BAND

D

VIEWINGS

By prior appointment only

Energy Efficiency Rating		Current	Potential
Very energy efficient - lower running costs			
(92 plus) A			
(81-91) B			
(69-80) C			75
(55-68) D		56	
(39-54) E			
(21-38) F			
(1-20) G			
Not energy efficient - higher running costs			
England & Wales		EU Directive 2002/91/EC	



Agents Note: Whilst every care has been taken to prepare these particulars, they are for guidance purposes only. All measurements are approximate and are for general guidance purposes only and whilst every care has been taken to ensure their accuracy, they should not be relied upon and potential buyers/tenants are advised to recheck the measurements

Shaw & Co
ESTATE AGENTS

OFFICE ADDRESS

Whitton
Twickenham
TW2 7LT

OFFICE DETAILS

0208 894 3646
whitton@shawandcoestates.com